

CANDLEWOOD LAKE

UNIT 9

112935

DESCRIPTION

SITUATED IN the Township of Congress, County of Morrow, and State of Ohio, being a part of Section 5 & 6 Township 18, Range 20, containing 143.40 acres in Unit 9.

SURVEYOR'S CERTIFICATION

I HEREBY CERTIFY that the within plat of Unit 9 Candlewood Lake was prepared by the office of George W. Raike, Inc., Consulting Engineers and Donald S. Vermilya, Registered Surveyor.

All bearings were computed from a magnetic bearing taken on June 29, 1971 and all distances are in feet and decimals thereof.

Donald S. Vermilya
Registered Surveyor No. 5695

DECLARATION AND DEDICATION

We do hereby certify that we are the owners of the land shown on the above plat and we do certify that we have caused the survey and subdivision thereof to be made as shown on the above plat and to be known as "Candlewood Lake Subdivision" UNIT 9 lots 1-342 AND P.C.S.A. INCLUSIVE in the Township of Congress, Morrow County, Ohio, and acknowledge said survey to be correct to the best of our knowledge and belief, and we hereby dedicate those State, County and Township Roads labeled on the map. The streets within the plat labeled "private street" are hereby reserved for the use of all public utility companies.

OWNER'S ACKNOWLEDGMENT

BE IT REMEMBERED that Whetstone Development, Inc., a Delaware Corporation owner of the lands shown on the attached plat, do hereby acknowledge the making of said plat to be its voluntary act and deed.

Witness
By Fred R. Grider
VICE PRESIDENT
By Ernest E. Rugenstein
ASST. SECTY.

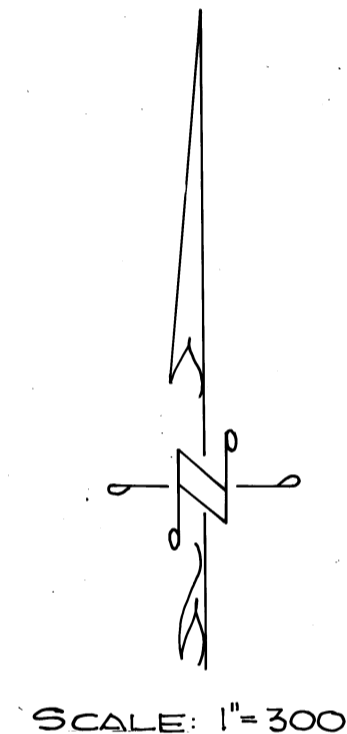
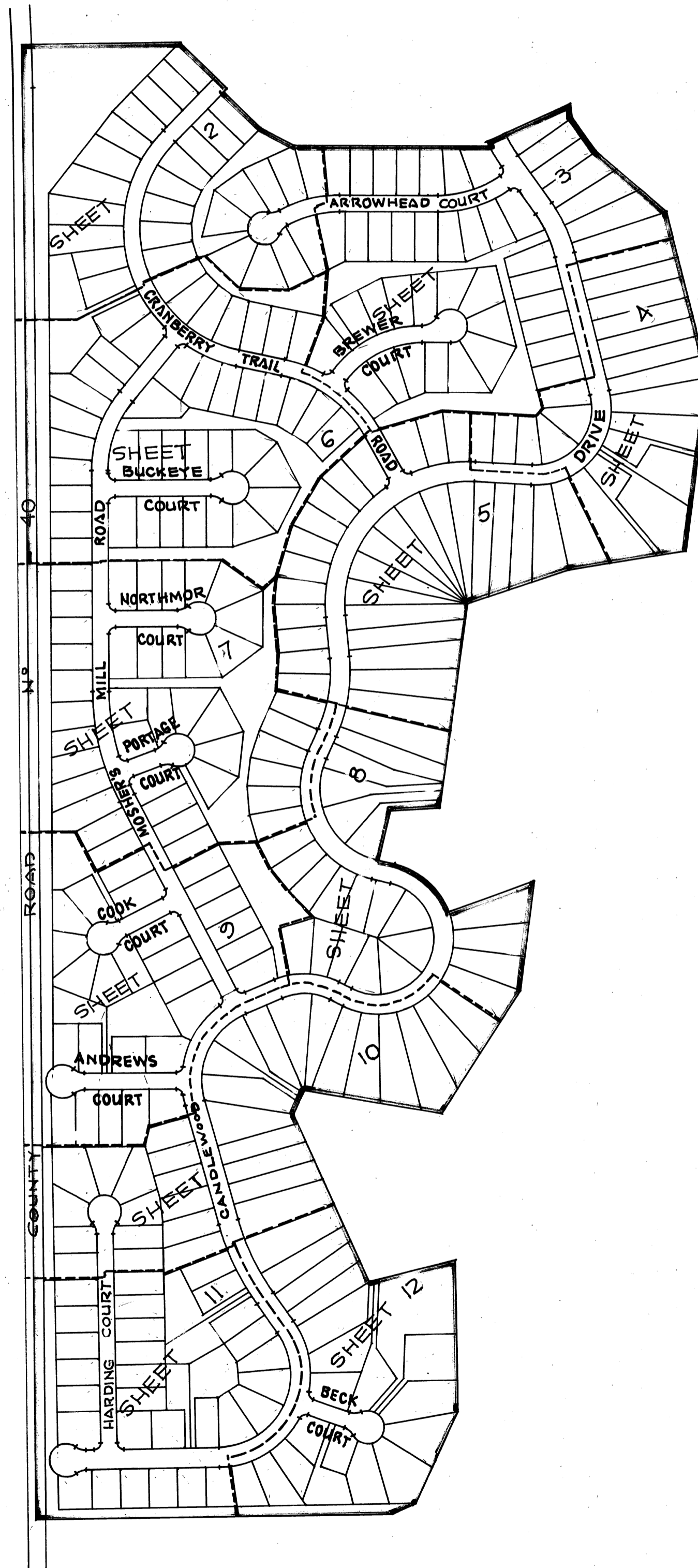
**STATE OF OHIO
COUNTY OF MORROW SS**

Before me, a notary public, in and for said county, personally appeared FRED GRIDER, VICE PRESIDENT and ERNEST ADGENSTEIN, ASST. SECTY. of Whetstone Development, Inc., the corporation which executed the foregoing Owner's Acknowledgment, who acknowledged that the seal affixed to said instrument is the corporate seal of said corporation; that they did sign and seal said instrument as such VICE PRES. and ASST. SECTY. in behalf of said corporation and by authority of its board of directors; and that said instrument is their free act and deed individually and as such VICE PRES. and ASST. SECTY. and the free and corporate act and deed of said Whetstone Development, Inc.

IN TESTIMONY WHEREOF I have hereunto subscribed my name and affixed my official seal at St. Charles, this 30 day of October, 1972.

Daphne Nipture
Notary Public

My Commission Expires April 9, 1975



PRESENTED TO MORROW COUNTY COMMISSIONERS

THE WITHIN PLAT was presented to the Board of Morrow County Commissioners for their approval on Oct 30 1972.
Robert Rhoadbeck
MORROW COUNTY COMMISSIONERS
John S. Lade
F. F. Bolinger
Clara Keenan
Clerk

APPROVAL OF MORROW COUNTY COMMISSIONERS

I HEREBY CERTIFY that this plat was approved by the Morrow County Commissioners at a regular meeting held Oct 30, 1972.
Robert Rhoadbeck
MORROW COUNTY COMMISSIONERS
John S. Lade
F. F. Bolinger
Clara Keenan
Clerk

APPROVAL OF MORROW COUNTY BOARD OF HEALTH

I HEREBY CERTIFY that this plat was approved by the Morrow County Board of Health at a regular meeting held Oct 25, 1972.
Carl Sandtbeck
(TITLE)
SANITARIAN

APPROVAL OF MORROW COUNTY REGIONAL PLANNING COMMISSION

I HEREBY CERTIFY that the within plat was approved by the Morrow County Regional Planning Commission at a REGULAR meeting held Oct 25, 1972.
T. Marvin Haek
(TITLE) PRESIDENT
Carl Sandtbeck
(TITLE) SECRETARY

APPROVAL OF MORROW COUNTY ENGINEER

I HEREBY APPROVE the within plat of Candlewood Lake, Congress Township, Morrow County, Ohio, this 25 day of Oct, 1972.
Justin Carley
Morrow County Engineer

AUDITOR'S CERTIFICATION

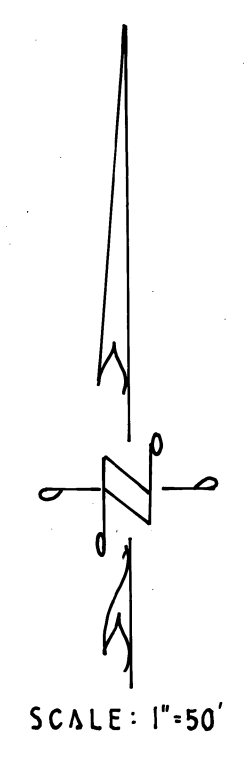
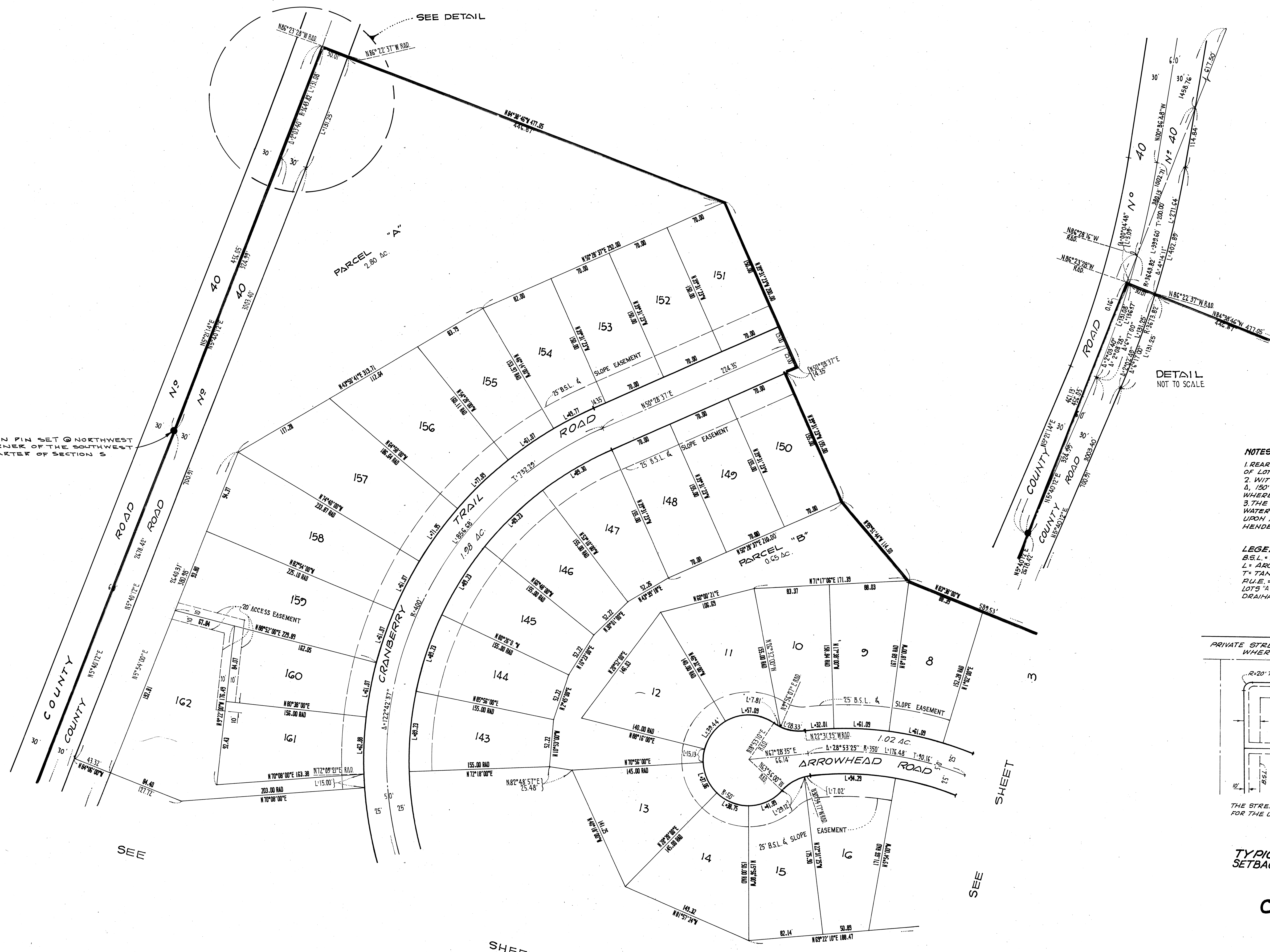
I HEREBY CERTIFY that there are no delinquent or unpaid taxes of record upon the above described property as of the date of transfer.
TRANSFERRED Oct 30, 1972.
Merrill Coughill
Morrow County Auditor

RECORDER'S CERTIFICATION

I HEREBY CERTIFY that the within plat was filed Oct 30 O'clock 10:17 AM, 1972, in Candlewood Lake Plat Book, Pages 1 to 12 UNIT 9 inclusive of the Morrow County Records.
FEE 84.00
Dorothy Thompson
Morrow County Recorder

ALL PROPERTY CORNERS MARKED BY IRON PINS
● = IRON PIN SET
▲ = RAILROAD SPIKE SET
CONCRETE MONUMENT □

IRON PIN SET @ NORTHWEST CORNER OF THE SOUTHWEST QUARTER OF SECTION 5



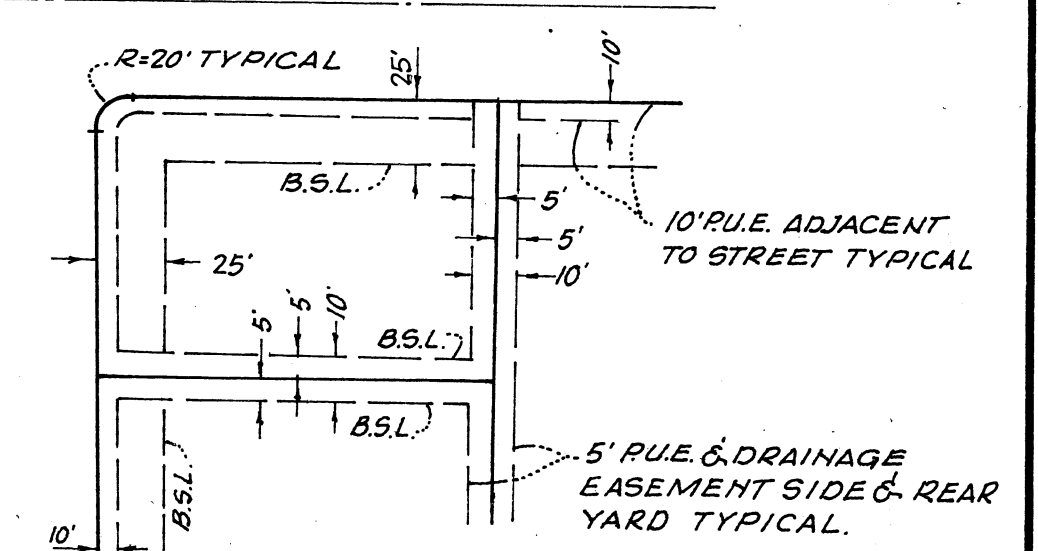
NOTES:

1. REAR LOT PINS WERE NOT SET AT THE REAR OF LOTS 246 TO 342 INCLUSIVE.
2. WITNESS POINTS WERE SET AS SHOWN A, 150' FROM THE FRONT LOT CORNER, EXCEPT WHERE NOTED.
3. THE LAKE LINE SHOWN IS FOR A NORMAL WATER SURFACE AT ELEVATION 1205 BASED UPON APRIL 1971 TOPOGRAPHY COMPILED BY HENDERSON AERIAL SURVEYS OF OHIO.

LEGEND

- B.S.L. = BUILDING SETBACK LINE.
- L = ARC LENGTH
- T = TANGENT LENGTH
- R.U.E. = PUBLIC UTILITY EASEMENT
- LOTS "A" TO "N" INCLUSIVE ARE SUBJECT TO DRAINAGE EASEMENTS IN THEIR ENTIRETY

PRIVATE STREETS EXCEPT WHERE NOTED

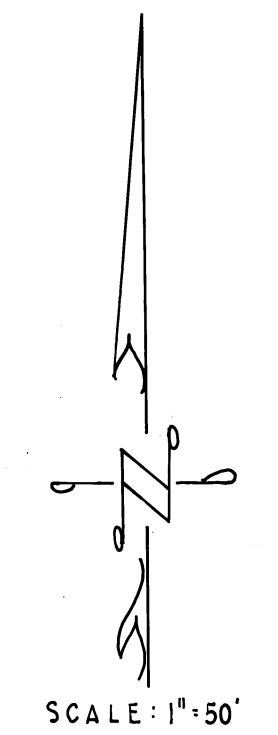
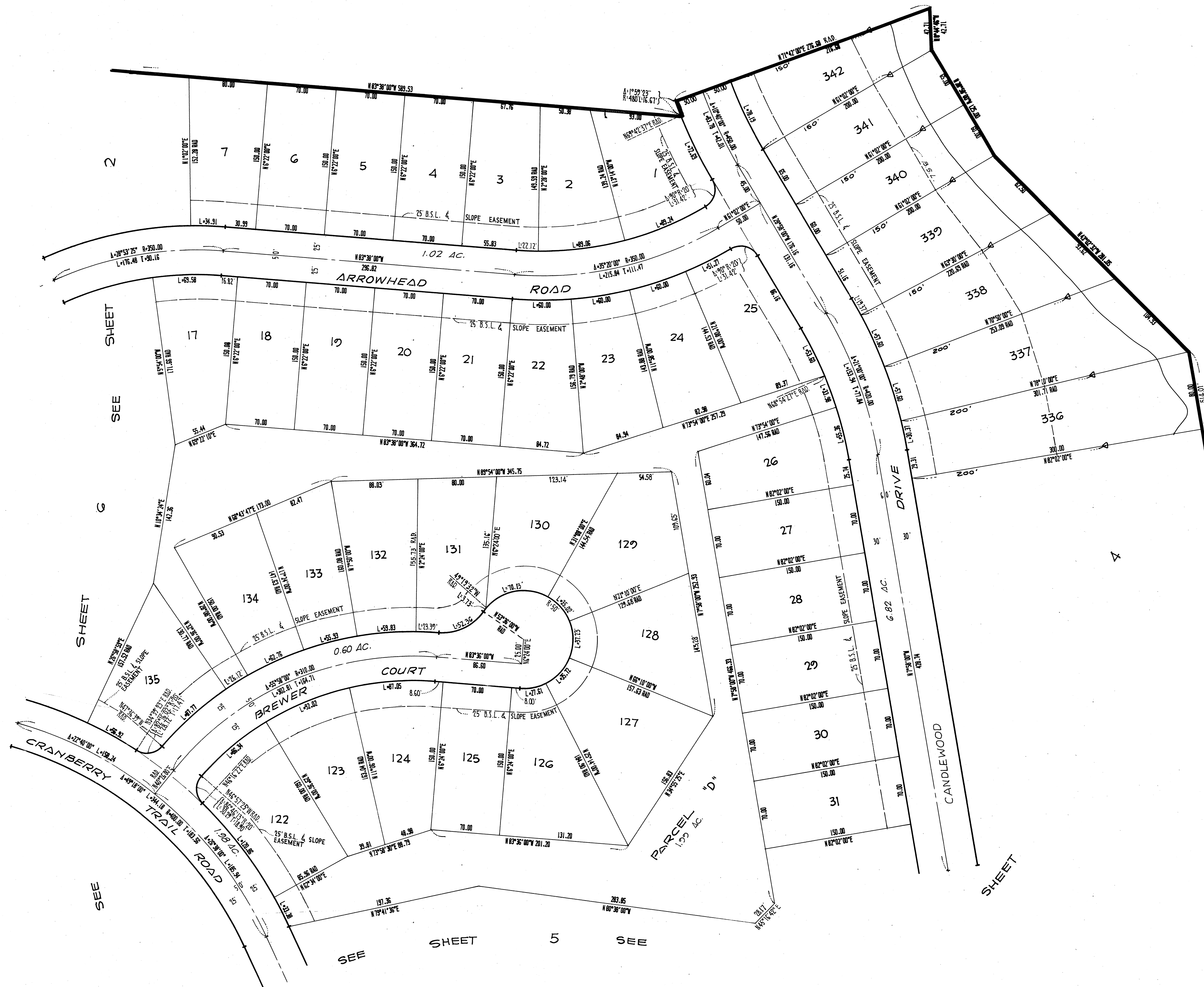


THE STREETS WITHIN THE SUBDIVISION ARE RESERVED FOR THE USE OF ALL PUBLIC UTILITY COMPANIES.

TYPICAL FRONT AND SIDEYARD SETBACK, SLOPE EASEMENT AND R.U.E. DETAIL (NO SCALE)

CANDLEWOOD LAKE UNIT NO. 9

BEING A SUBDIVISION OF PORTIONS OF SECTION 5&8 TOWNSHIP 13 RANGE 20 CONGRESS TOWNSHIP, IN THE COUNTY OF MORROW, STATE OF OHIO.

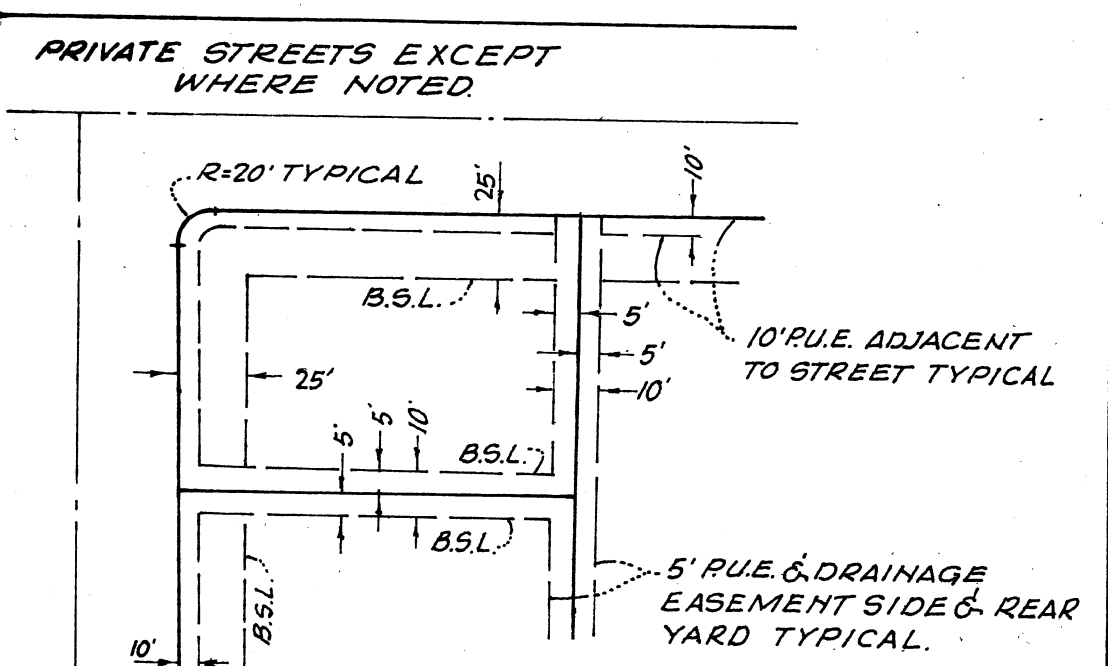


NOTES:

1. REAR LOT PINS WERE NOT SET AT THE REAR OF LOTS 24 TO 342 INCLUSIVE.
2. WITNESS POINTS WERE SET AS SHOWN 4, 150' FROM THE FRONT LOT CORNER, EXCEPT WHERE NOTED.
3. THE LAKE LINE SHOWN IS FOR A NORMAL WATER SURFACE AT ELEVATION 1205 BASED UPON APRIL 1971 TOPOGRAPHY COMPILED BY HENDERSON AERIAL SURVEYS OF OHIO.

LEGEND

B.S.L. = BUILDING SETBACK LINE.
 L = ARC LENGTH
 T = TANGENT LENGTH
 P.U.E. = PUBLIC UTILITY EASEMENT
 LOTS "A" TO "N" INCLUSIVE ARE SUBJECT TO DRAINAGE EASEMENTS IN THEIR ENTIRETY



THE STREETS WITHIN THE SUBDIVISION ARE RESERVED FOR THE USE OF ALL PUBLIC UTILITY COMPANIES.

TYPICAL FRONT AND SIDERYARD SETBACK, SLOPE EASEMENT AND P.U.E. DETAIL
(NO SCALE)

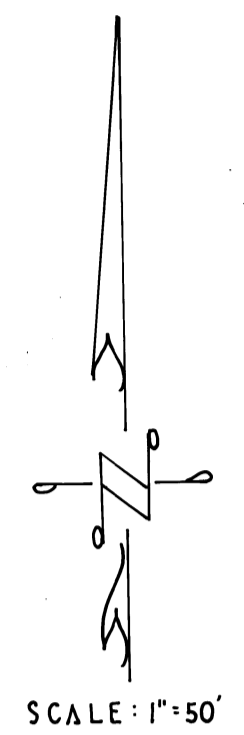
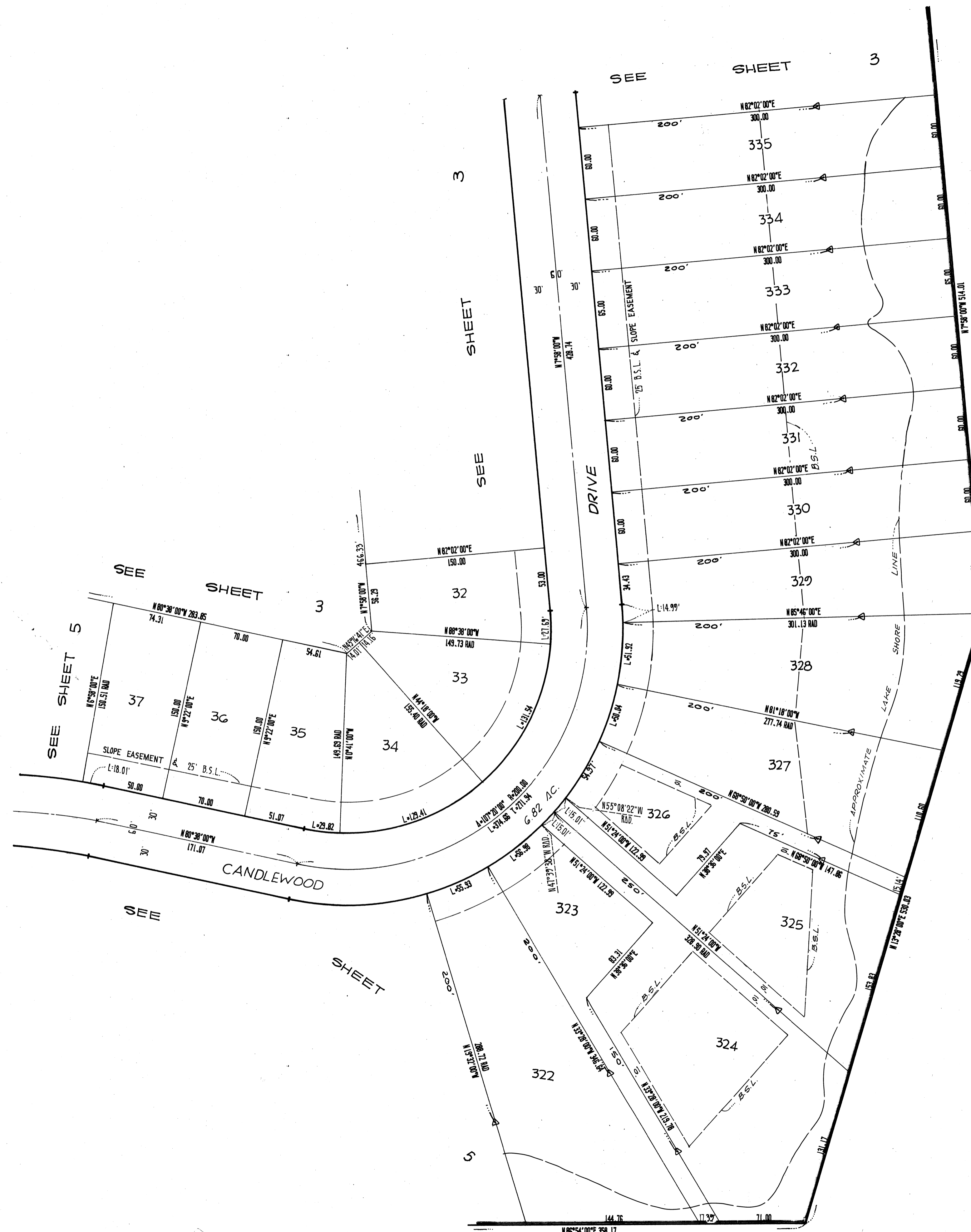
CANDLEWOOD LAKE
UNIT NO. 2

BEING A SUBDIVISION OF PORTIONS OF SECTION 56.8 TOWNSHIP 13 RANGE 20, CONGRESS TOWNSHIP, IN THE COUNTY OF MORROW, STATE OF OHIO.

SEE SHEET G

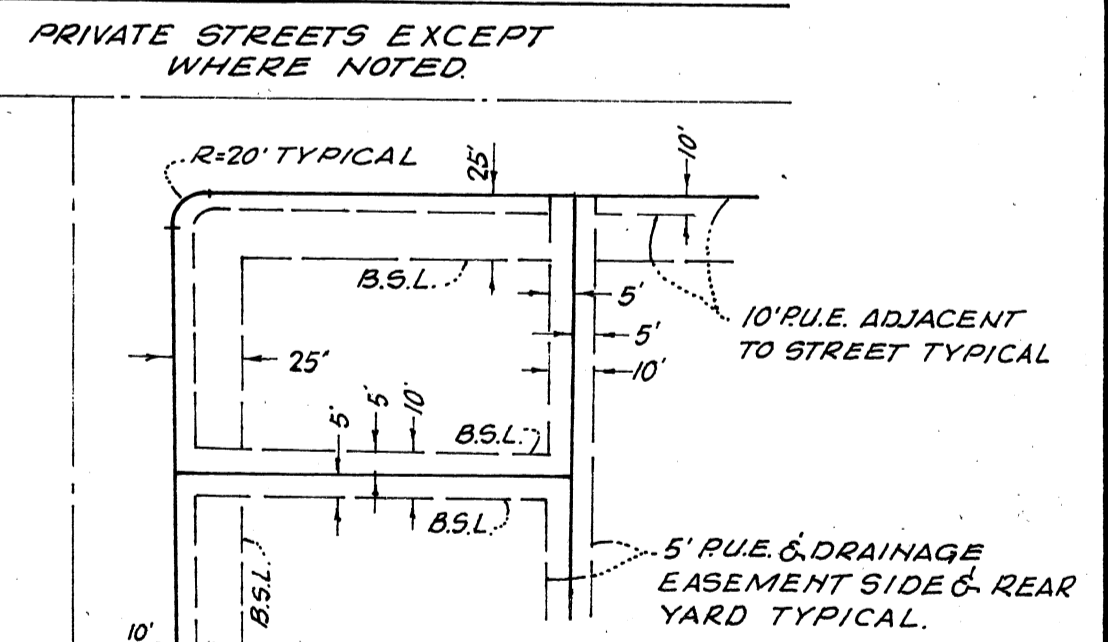
SEE SHEET 5

SEE SHEET



- NOTES:**
1. REAR LOT PINS WERE NOT SET AT THE REAR OF LOTS 326 TO 342 INCLUSIVE.
 2. WITNESS POINTS WERE SET AS SHOWN & 150' FROM THE FRONT LOT CORNER, EXCEPT WHERE NOTED.
 3. THE LAKE LINE SHOWN IS FOR A NORMAL WATER SURFACE AT ELEVATION 1205 BASED UPON APRIL 1971 TOPOGRAPHY COMPILED BY HENDERSON AERIAL SURVEYS OF OHIO.

LEGEND
 B.S.L. = BUILDING SETBACK LINE.
 L = ARC LENGTH
 T = TANGENT LENGTH
 R.U.E. = PUBLIC UTILITY EASEMENT
 LOTS "A" TO "N" INCLUSIVE ARE SUBJECT TO DRAINAGE EASEMENTS IN THEIR ENTIRETY

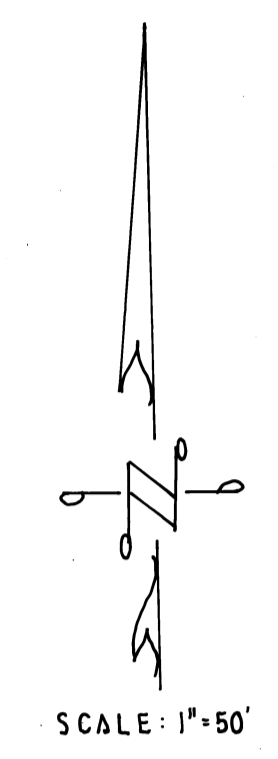
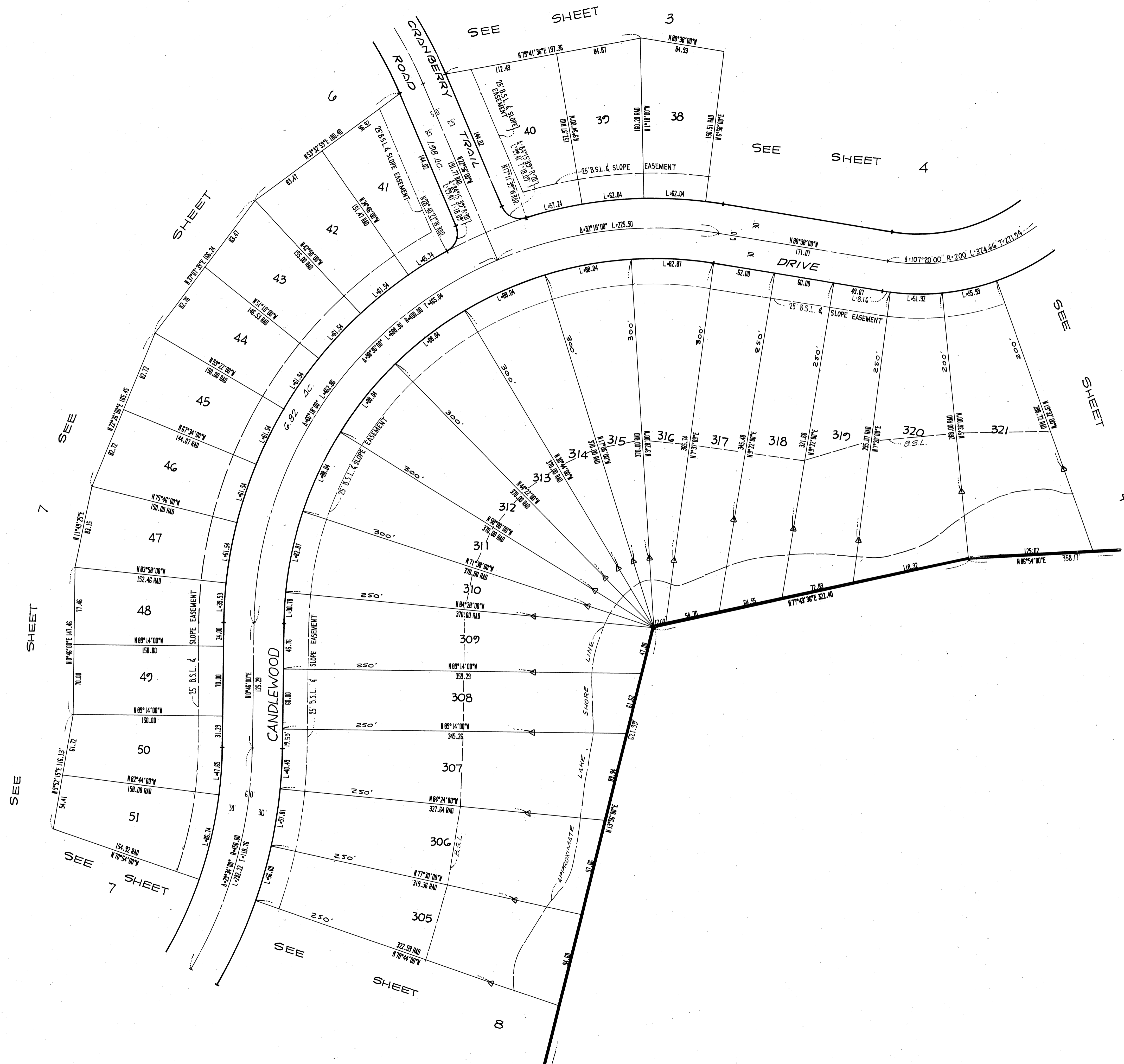


THE STREETS WITHIN THE SUBDIVISION ARE RESERVED FOR THE USE OF ALL PUBLIC UTILITY COMPANIES.

TYPICAL FRONT AND SIDEYARD SETBACK, SLOPE EASEMENT AND R.U.E. DETAIL
 (NO SCALE)

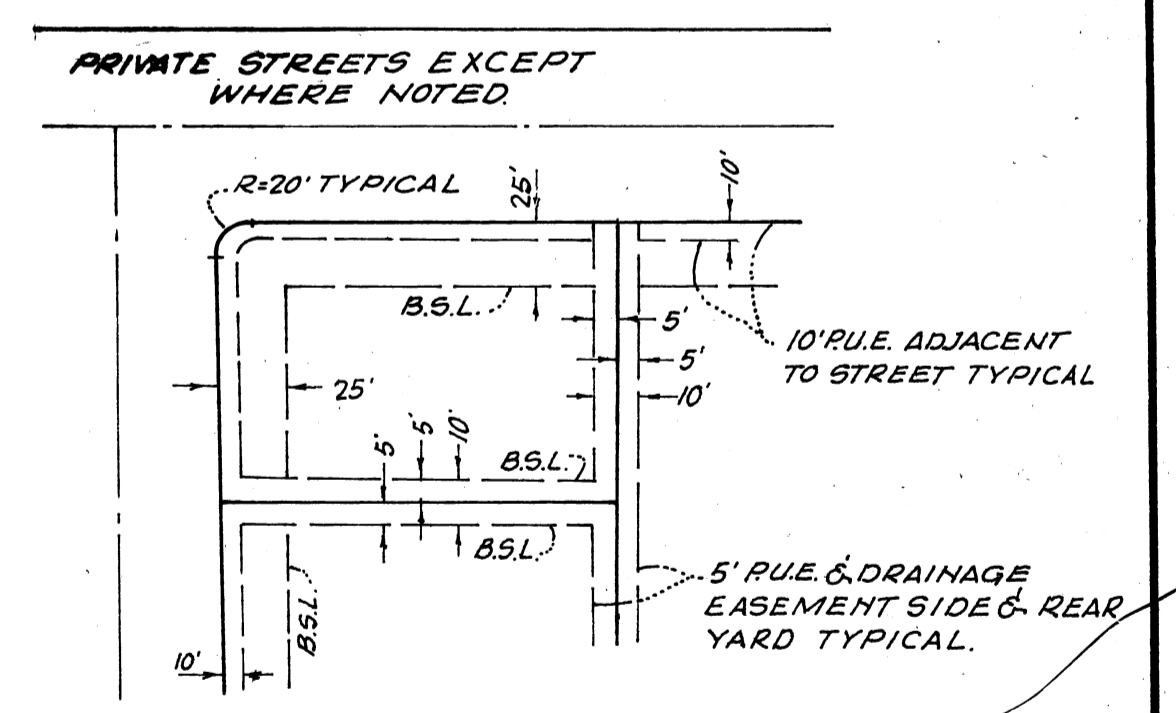
CANDLEWOOD LAKE
 UNIT NO. 9

BEING A SUBDIVISION OF PORTIONS OF SECTION 3&3 TOWNSHIP 13 RANGE 20 CONGRESS TOWNSHIP, IN THE COUNTY OF MORROW, STATE OF OHIO.



- NOTES:**
1. REAR LOT PINS WERE NOT SET AT THE REAR OF LOTS 266 TO 342 INCLUSIVE.
 2. WITNESS POINTS WERE SET AS SHOWN & 150' FROM THE FRONT LOT CORNER, EXCEPT WHERE NOTED.
 3. THE LAKE LINE SHOWN IS FOR A NORMAL WATER SURFACE AT ELEVATION 1205 BASED UPON APRIL 1971 TOPOGRAPHY COMPILED BY HENDERSON AERIAL SURVEYS OF OHIO.

- LEGEND**
- B.S.L. = BUILDING SETBACK LINE.
 - L = ARC LENGTH
 - T = TANGENT LENGTH
 - R.U.E. = PUBLIC UTILITY EASEMENT
 - LOTS 1" TO 14" INCLUSIVE ARE SUBJECT TO DRAINAGE EASEMENTS IN THEIR ENTIRETY.

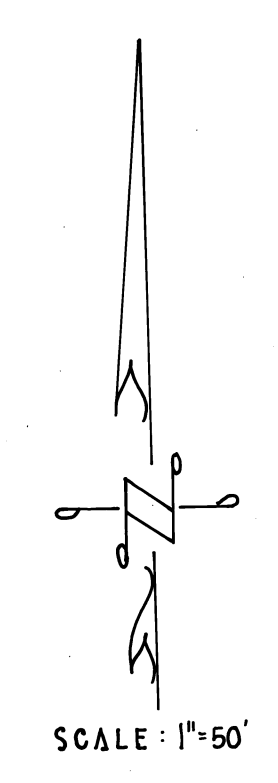
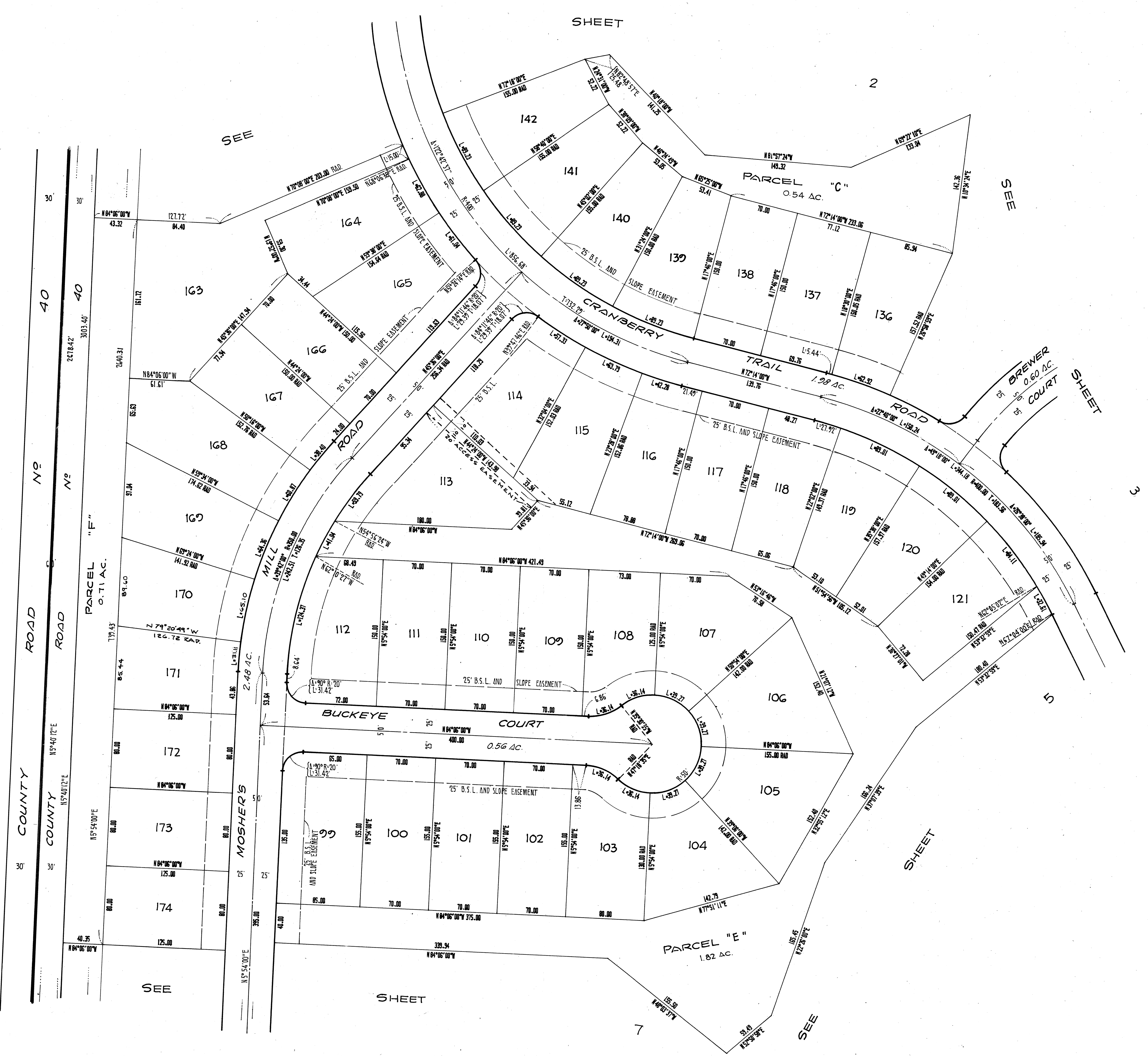


THE STREETS WITHIN THE SUBDIVISION ARE RESERVED FOR THE USE OF ALL PUBLIC UTILITY COMPANIES.

TYPICAL FRONT AND SIDEYARD SETBACK, SLOPE EASEMENT AND R.U.E. DETAIL
(No Scale)

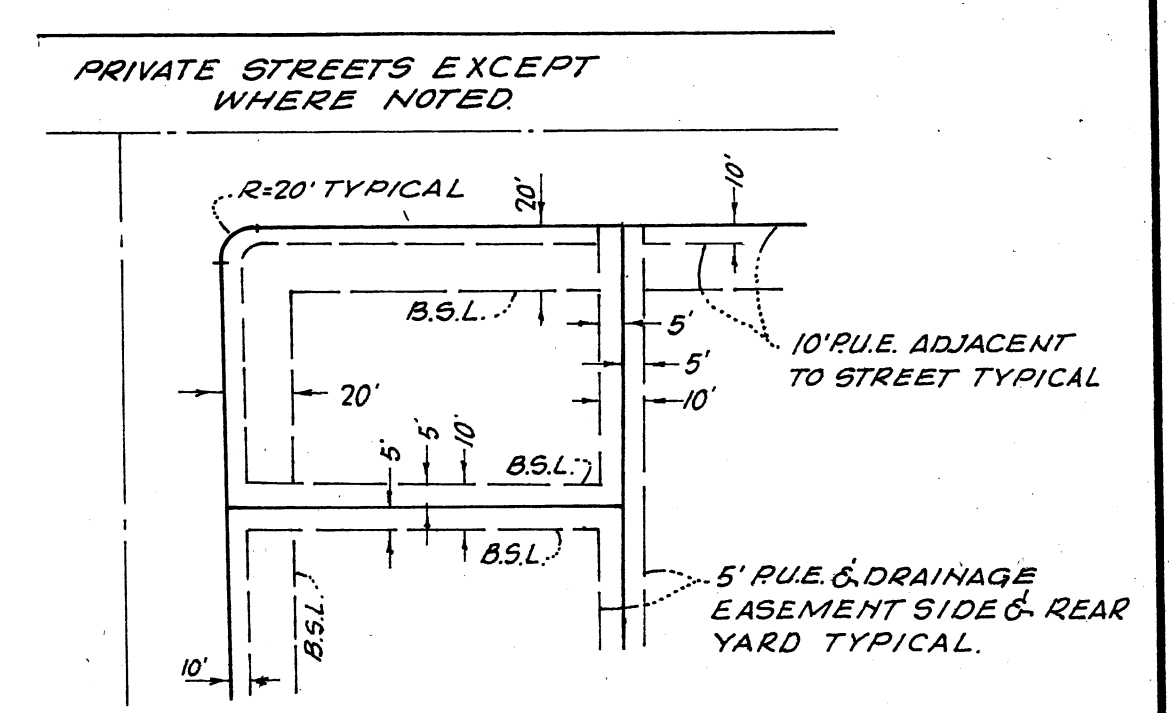
CANDLEWOOD LAKE
UNIT NO. 2

BEING A SUBDIVISION OF PORTIONS OF SECTION 5&8 TOWNSHIP 18 RANGE 20 CONGRESS TOWNSHIP, IN THE COUNTY OF MORROW, STATE OF OHIO.



- NOTES:**
1. REAR LOT PINS WERE NOT SET AT THE REAR OF LOTS 266 TO 342 INCLUSIVE.
 2. WITNESS POINTS WERE SET AS SHOWN Δ, 150' FROM THE FRONT LOT CORNER, EXCEPT WHERE NOTED.
 3. THE LAKE LINE SHOWN IS FOR A NORMAL WATER SURFACE AT ELEVATION 1205' BASED UPON APRIL 1971 TOPOGRAPHY COMPILED BY HENDERSON AERIAL SURVEYS OF OHIO.

LEGEND
 B.S.L. = BUILDING SETBACK LINE
 L = ARC LENGTH
 T = TANGENT LENGTH
 P.U.E. = PUBLIC UTILITY EASEMENT
 LOTS "A" TO "N" INCLUSIVE ARE SUBJECT TO DRAINAGE EASEMENTS IN THEIR ENTIRETY.

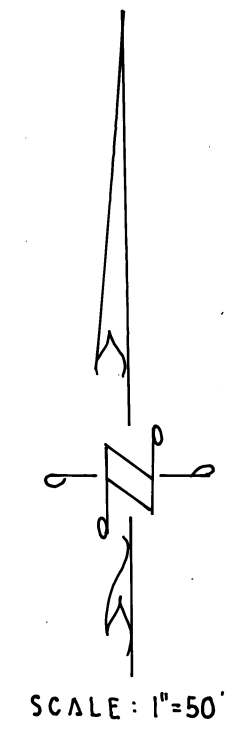
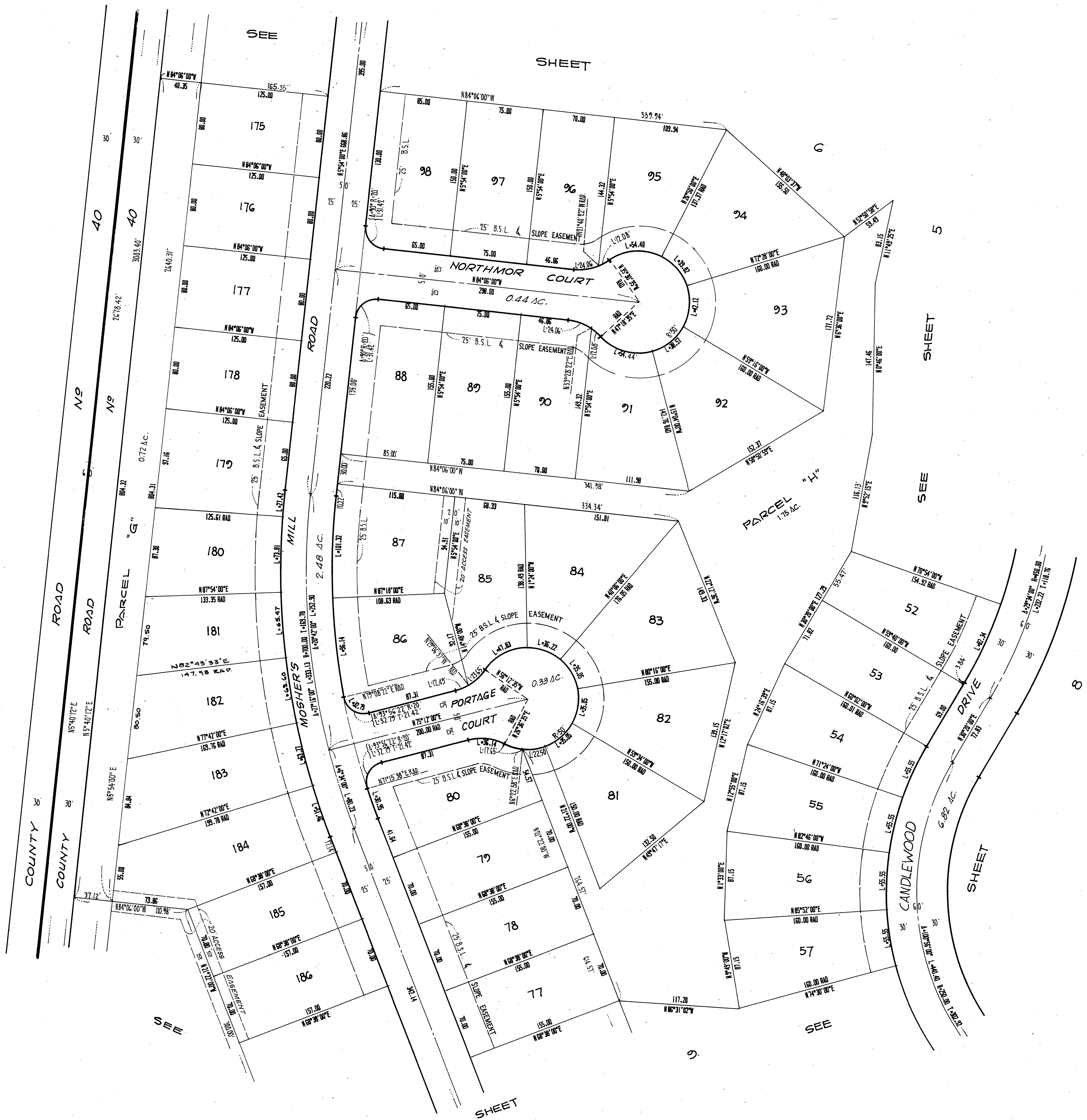


THE STREETS WITHIN THE SUBDIVISION ARE RESERVED FOR THE USE OF ALL PUBLIC UTILITY COMPANIES.

TYPICAL FRONT AND SIDEYARD SETBACK, SLOPE EASEMENT AND P.U.E. DETAIL (NO SCALE)

CANDLEWOOD LAKE UNIT NO. 9

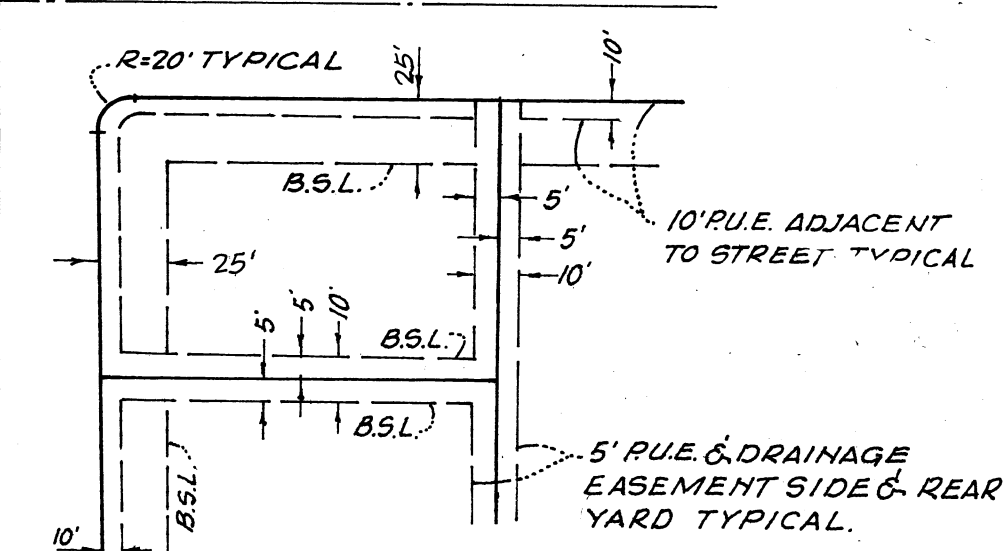
BEING A SUBDIVISION OF PORTIONS OF SECTION 56.3 TOWNSHIP 13 RANGE 20, CONGRESS TOWNSHIP, IN THE COUNTY OF MORROW, STATE OF OHIO.



- NOTES:**
1. REAR LOT PINS WERE NOT SET AT THE REAR OF LOTS 264 TO 342 INCLUSIVE.
 2. WITNESS POINTS WERE SET AS SHOWN & 150' FROM THE FRONT LOT CORNER, EXCEPT WHERE NOTED.
 3. THE LAKE LINE SHOWN IS FOR A NORMAL WATER SURFACE AT ELEVATION 1205 BASED UPON ADJ. 1971 TOPOGRAPHY COMPILED BY HENDERSON AERIAL SURVEYS OF OHIO.

- LEGEND**
- B.S.L. = BUILDING SETBACK LINE.
 - L = ARC LENGTH
 - T = TANGENT LENGTH
 - P.U.E. = PUBLIC UTILITY EASEMENT
 - LOTS 77 TO 186 INCLUSIVE ARE SUBJECT TO DRAINAGE EASEMENTS IN THEIR ENTIRETY.

PRIVATE STREETS EXCEPT WHERE NOTED

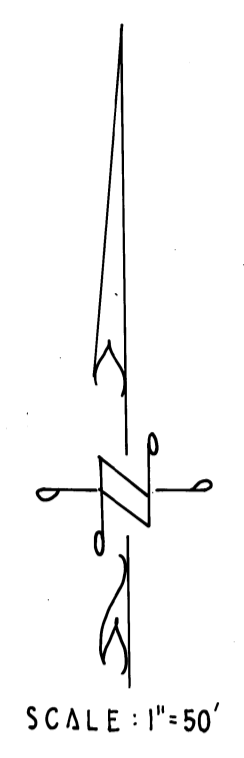
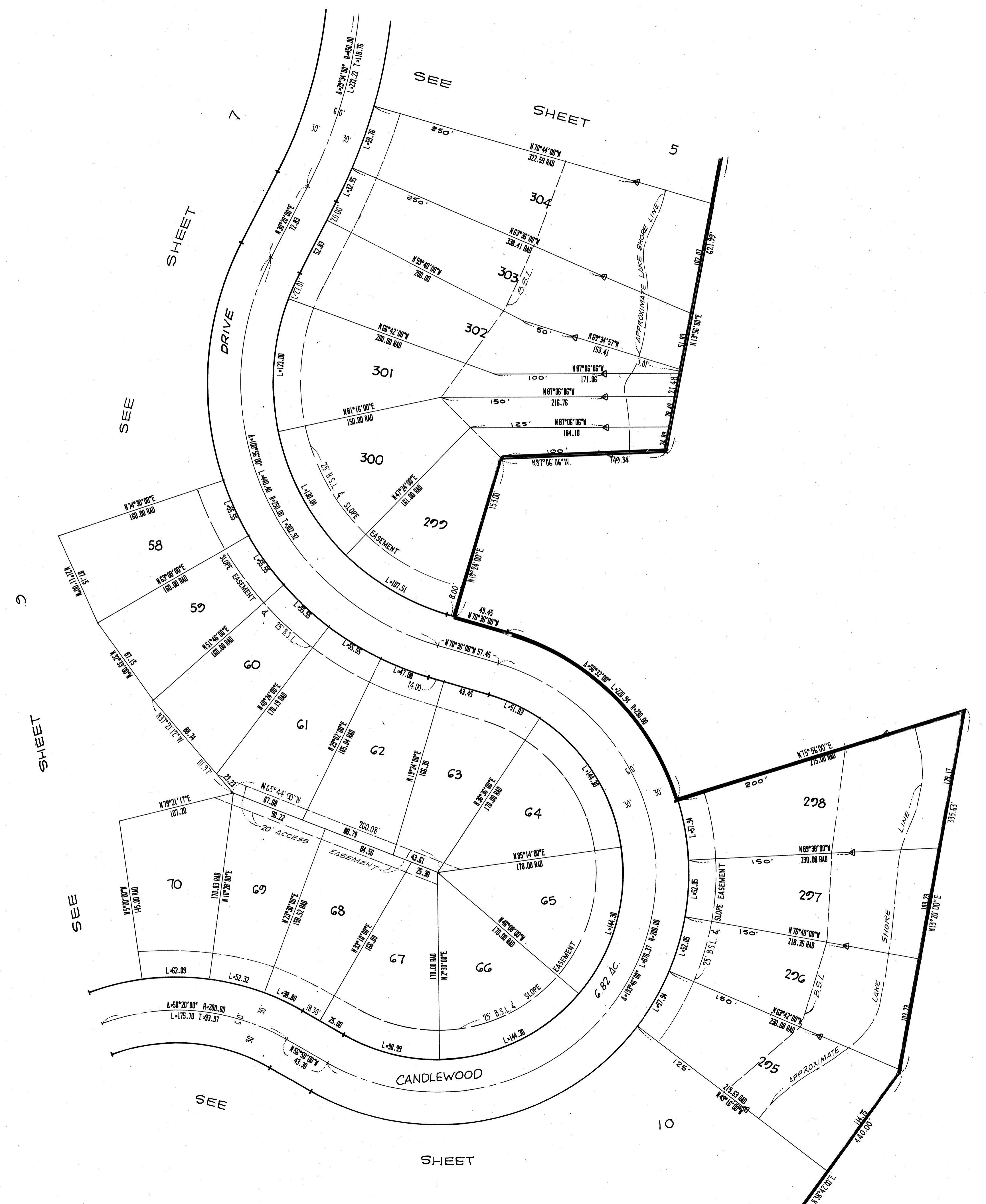


THE STREETS WITHIN THE SUBDIVISION ARE RESERVED FOR THE USE OF ALL PUBLIC UTILITY COMPANIES.

TYPICAL FRONT AND SIDEYARD SETBACK, SLOPE EASEMENT AND P.U.E. DETAIL (NO SCALE)

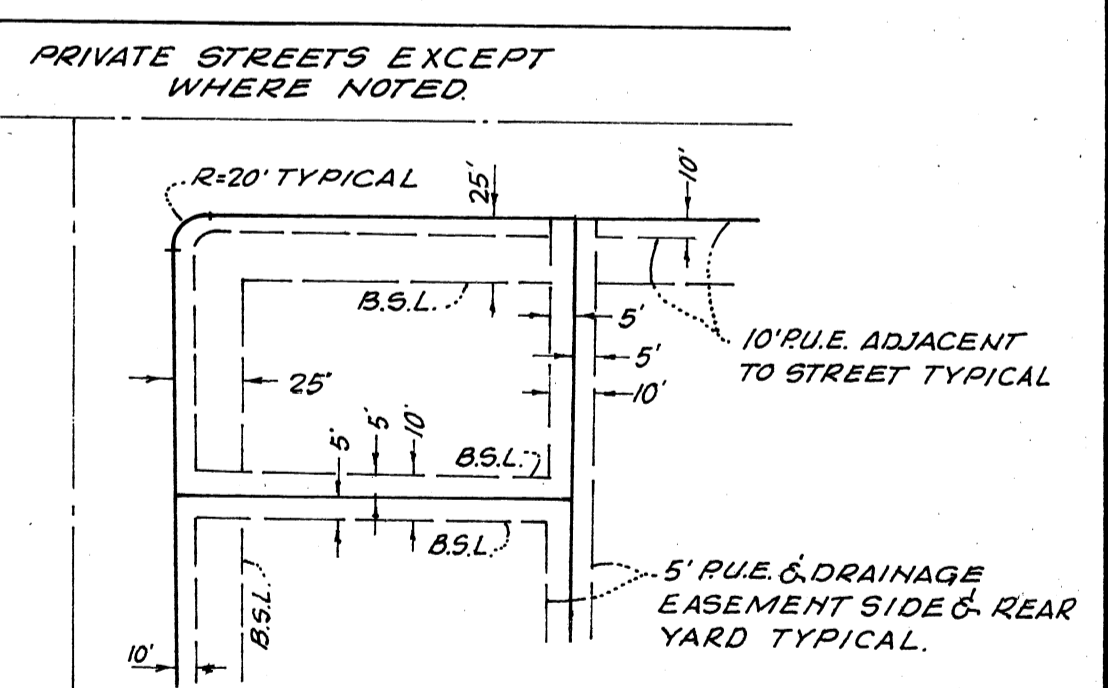
CANDLEWOOD LAKE UNIT NO. 9

BEING A SUBDIVISION OF PORTIONS OF SECTION 5 & 8 TOWNSHIP 13 RANGE 20 CONGRESS TOWNSHIP, IN THE COUNTY OF MORROW, STATE OF OHIO.



- NOTES:**
1. REAR LOT PINS WERE NOT SET AT THE REAR OF LOTS 296 TO 302 INCLUSIVE.
 2. WITNESS POINTS WERE SET AS SHOWN & 150' FROM THE FRONT LOT CORNER, EXCEPT WHERE NOTED.
 3. THE LAKE LINE SHOWN IS FOR A NORMAL WATER SURFACE AT ELEVATION 1205 BASED UPON APRIL 1971 TOPOGRAPHY COMPILED BY HENDERSON AERIAL SURVEYS OF OHIO.

LEGEND
 B.S.L. = BUILDING SETBACK LINE
 L = ARC LENGTH
 T = TANGENT LENGTH
 P.U.E. = PUBLIC UTILITY EASEMENT
 LOTS 58 TO 66 INCLUSIVE ARE SUBJECT TO DRAINAGE EASEMENTS IN THEIR ENTIRETY



THE STREETS WITHIN THE SUBDIVISION ARE RESERVED FOR THE USE OF ALL PUBLIC UTILITY COMPANIES.

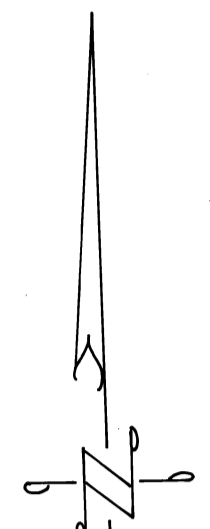
TYPICAL FRONT AND SIDERYARD SETBACK, SLOPE EASEMENT AND P.U.E. DETAIL
 (NO SCALE)

CANDLEWOOD LAKE UNIT NO. 9

BEING A SUBDIVISION OF PORTIONS OF SECTION 5&6 TOWNSHIP 13 RANGE 20 CONGRESS TOWNSHIP, IN THE COUNTY OF MORROW, STATE OF OHIO.



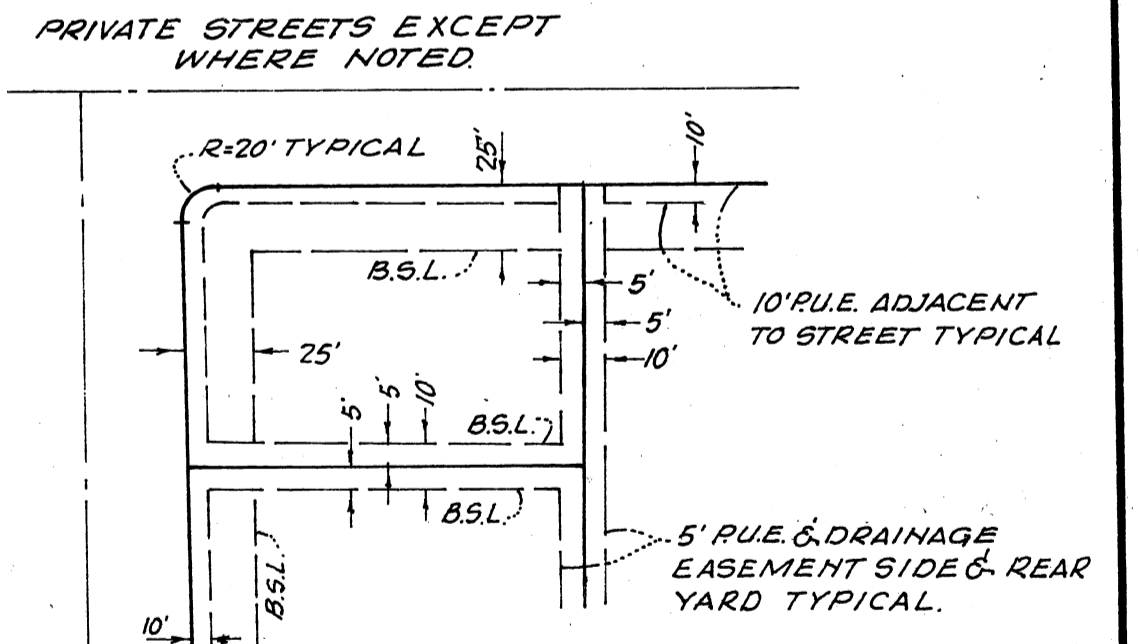
SEE SHEET



SCALE: 1"=50'

- NOTES:**
1. REAR LOT PINS WERE NOT SET AT THE REAR OF LOTS 242 TO 242 INCLUSIVE.
 2. WITNESS POINTS WERE SET AS SHOWN Δ, 150' FROM THE FRONT LOT CORNER, EXCEPT WHERE NOTED.
 3. THE LAKE LINE SHOWN IS FOR A NORMAL WATER SURFACE AT ELEVATION 1205 BASED UPON APRIL 1971 TOPOGRAPHY COMPILED BY HENDERSON AERIAL SURVEYS OF OHIO.

- LEGEND**
- B.S.L. - BUILDING SETBACK LINE.
 - L - ARC LENGTH
 - T - TANGENT LENGTH
 - RUE - PUBLIC UTILITY EASEMENT
 - LOTS 'X' TO 'N' INCLUSIVE ARE SUBJECT TO DRAINAGE EASEMENTS IN THEIR ENTIRETY.

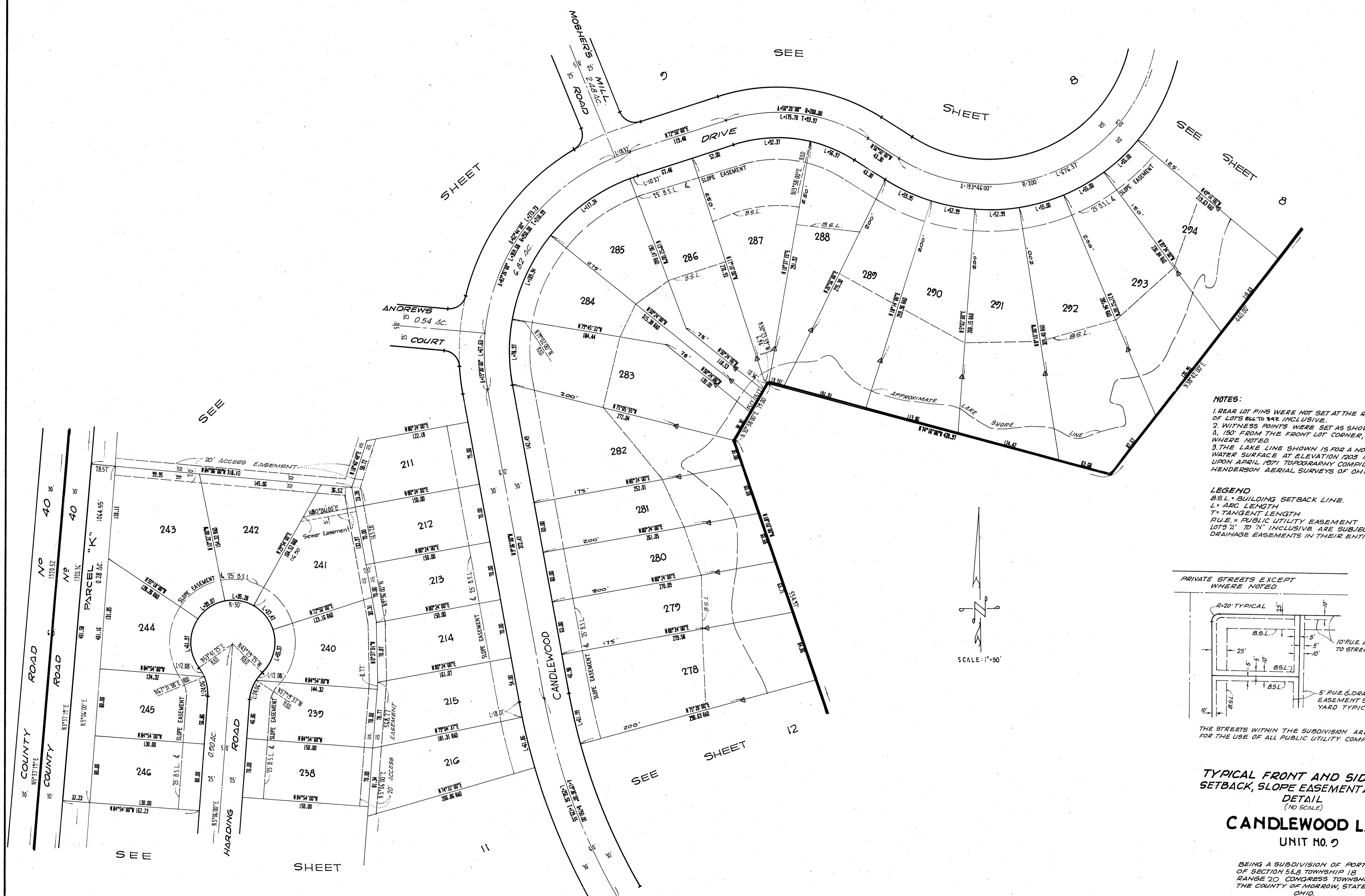


THE STREETS WITHIN THE SUBDIVISION ARE RESERVED FOR THE USE OF ALL PUBLIC UTILITY COMPANIES.

TYPICAL FRONT AND SIDEYARD SETBACK, SLOPE EASEMENT AND RUE. DETAIL (NO SCALE)

CANDLEWOOD LAKE UNIT NO. 2

BEING A SUBDIVISION OF PORTIONS OF SECTION 56.8, TOWNSHIP 13, RANGE 20, CONGRESS TOWNSHIP, IN THE COUNTY OF MORROW, STATE OF OHIO.



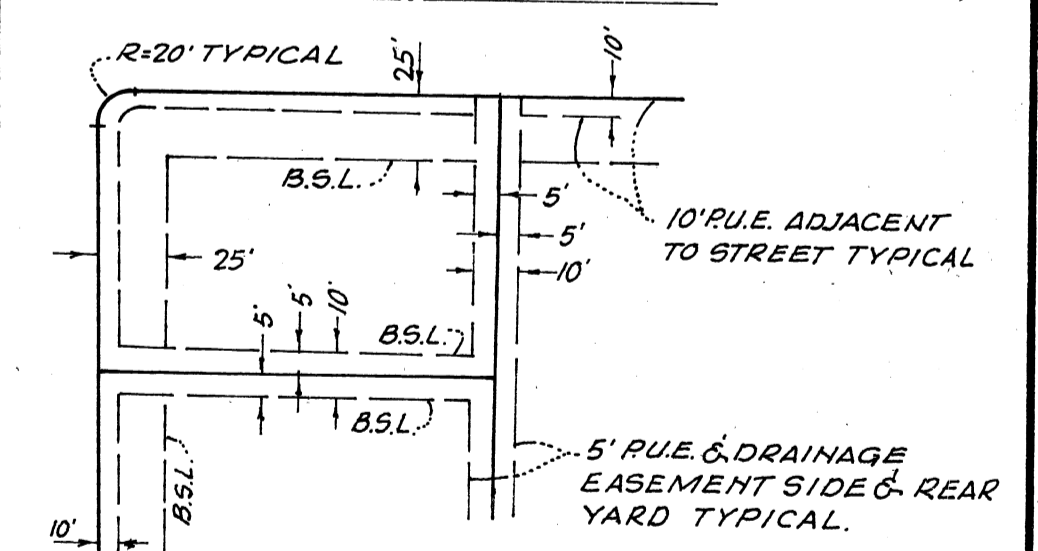
NOTES:

1. REAR LOT PINS WERE NOT SET AT THE REAR OF LOTS 266 TO 292 INCLUSIVE.
2. WITNESS POINTS WERE SET AS SHOWN & 150' FROM THE FRONT LOT CORNER, EXCEPT WHERE NOTED.
3. THE LAKE LINE SHOWN IS FOR A NORMAL WATER SURFACE AT ELEVATION 1205 BASED UPON APRIL 1971 TOPOGRAPHY COMPILED BY HENDERSON AERIAL SURVEYS OF OHIO.

LEGEND

B.S.L. = BUILDING SETBACK LINE.
 L = ARC LENGTH
 T = TANGENT LENGTH
 P.U.E. = PUBLIC UTILITY EASEMENT
 LOTS 1' TO 10' INCLUSIVE ARE SUBJECT TO DRAINAGE EASEMENTS IN THEIR ENTIRETY.

PRIVATE STREETS EXCEPT WHERE NOTED.



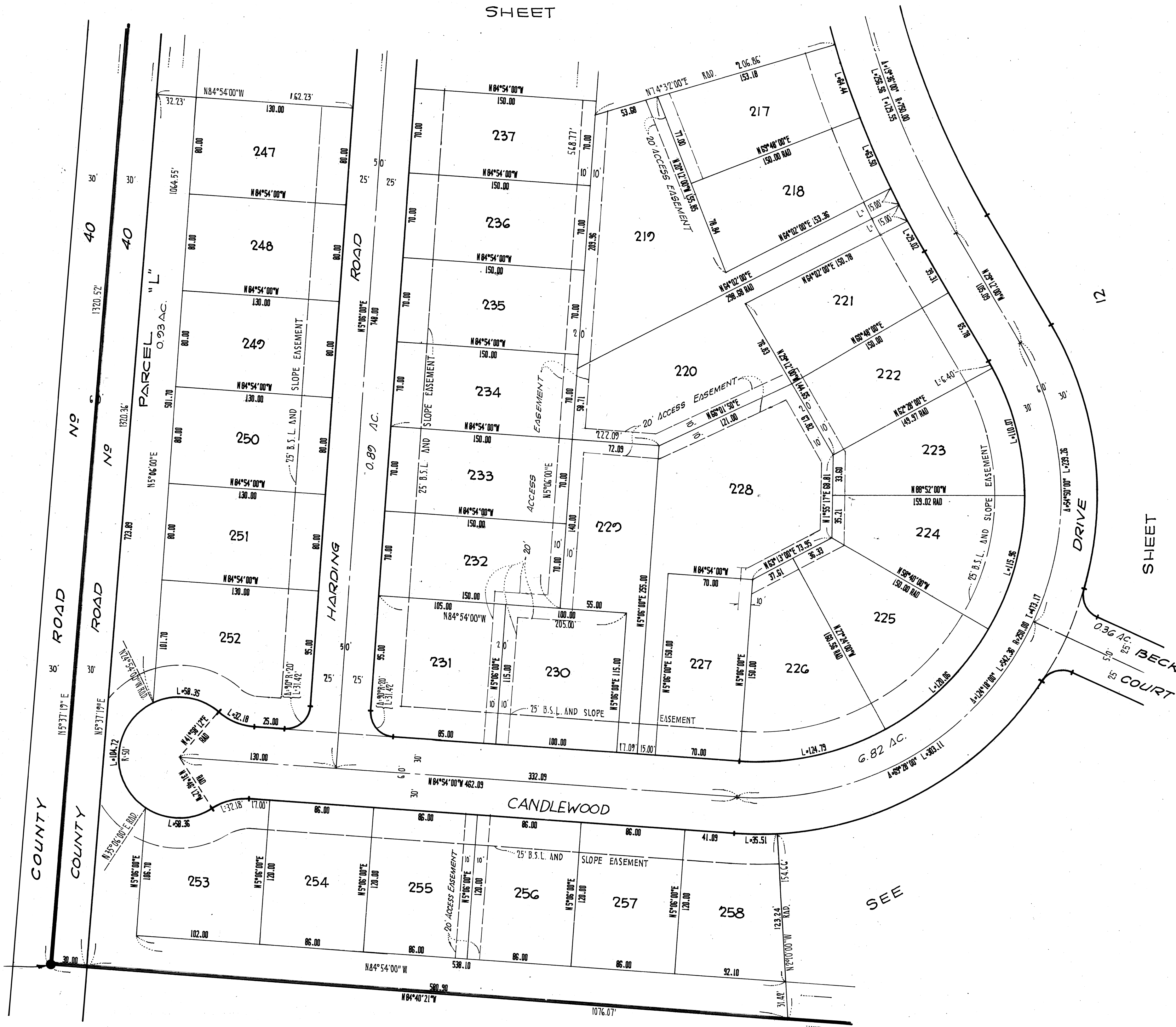
THE STREETS WITHIN THE SUBDIVISION ARE RESERVED FOR THE USE OF ALL PUBLIC UTILITY COMPANIES.

TYPICAL FRONT AND SIDEYARD SETBACK, SLOPE EASEMENT AND P.U.E. DETAIL
(NO SCALE)

CANDLEWOOD LAKE
UNIT NO. 2

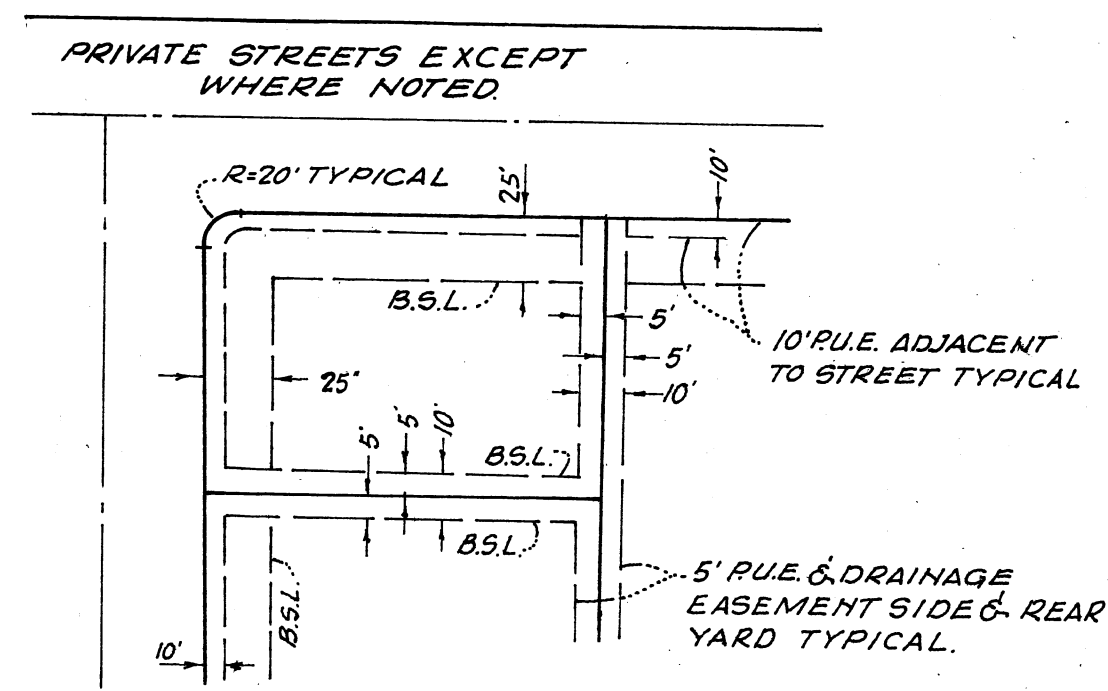
BEING A SUBDIVISION OF PORTIONS OF SECTION 5&8 TOWNSHIP 18 RANGE 20 CONGRESS TOWNSHIP, IN THE COUNTY OF MORROW, STATE OF OHIO.

SEE SHEET 10



NOTES:
 1. REAR LOT PINS WERE NOT SET AT THE REAR OF LOTS 246 TO 248 INCLUSIVE.
 2. WITNESS POINTS WERE SET AS SHOWN & 150' FROM THE FRONT LOT CORNER, EXCEPT WHERE NOTED.
 3. THE LAKE LINE SHOWN IS FOR A NORMAL WATER SURFACE AT ELEVATION 1205 BASED UPON APRIL 1971 TOPOGRAPHY COMPILED BY HENDERSON AERIAL SURVEYS OF OHIO.

LEGEND
 B.S.L. = BUILDING SETBACK LINE
 L = ARC LENGTH
 T = TANGENT LENGTH
 R.U.E. = PUBLIC UTILITY EASEMENT
 LOTS 3" TO 11" INCLUSIVE ARE SUBJECT TO DRAINAGE EASEMENTS IN THEIR ENTIRETY.

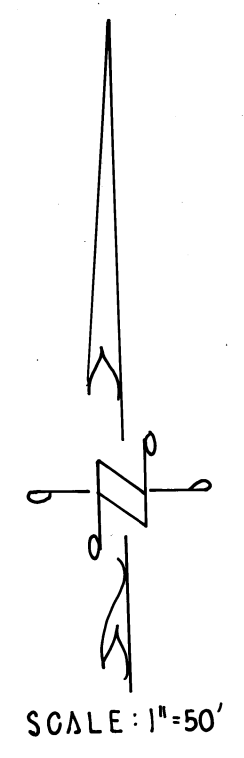
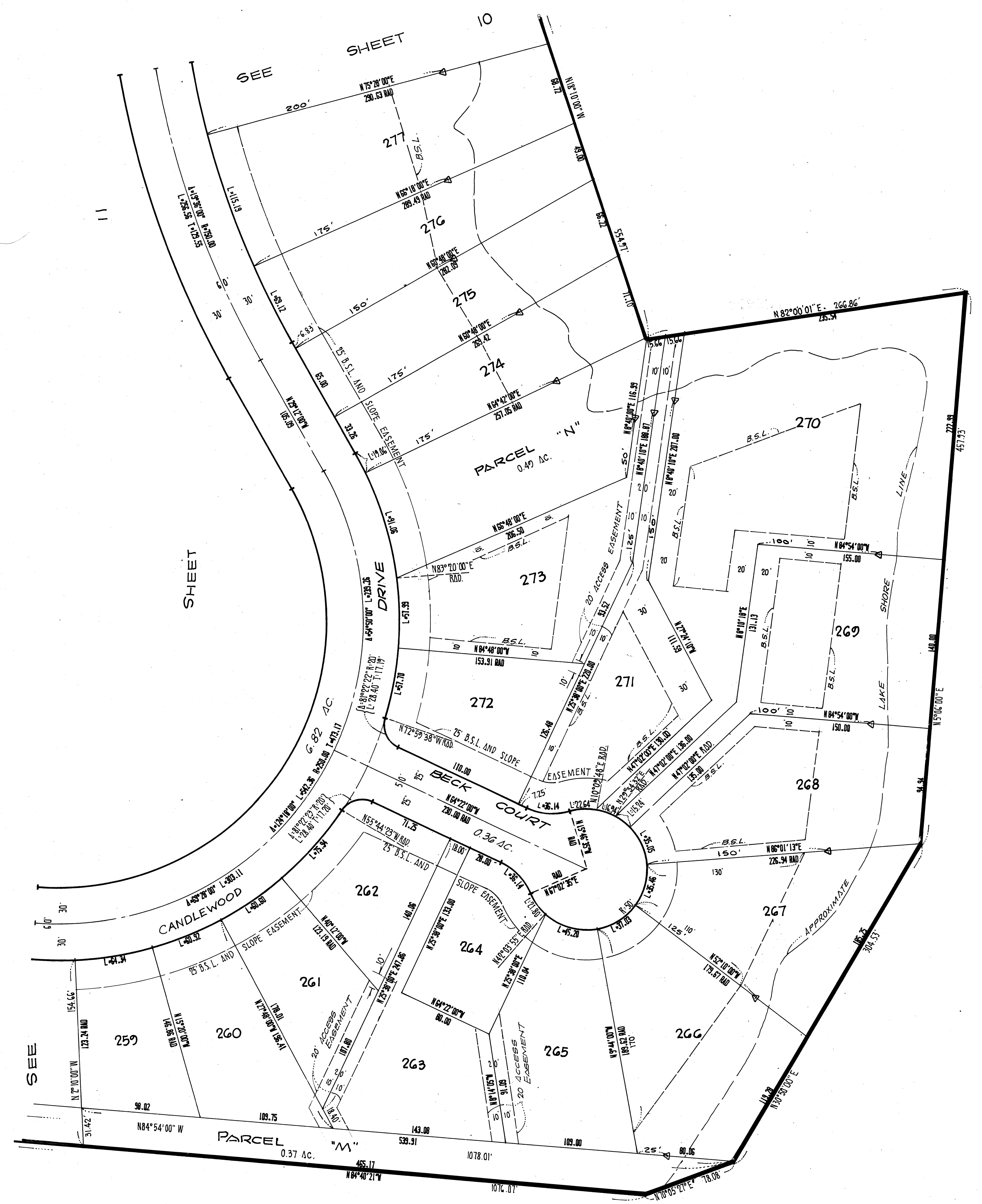


THE STREETS WITHIN THE SUBDIVISION ARE RESERVED FOR THE USE OF ALL PUBLIC UTILITY COMPANIES.

TYPICAL FRONT AND SIDEYARD SETBACK, SLOPE EASEMENT AND R.U.E. DETAIL
 (NO SCALE)

CANDLEWOOD LAKE UNIT NO. 2

BEING A SUBDIVISION OF PORTIONS OF SECTION 56.8 TOWNSHIP 18 RANGE 20 CONGRESS TOWNSHIP, IN THE COUNTY OF MORROW, STATE OF OHIO.

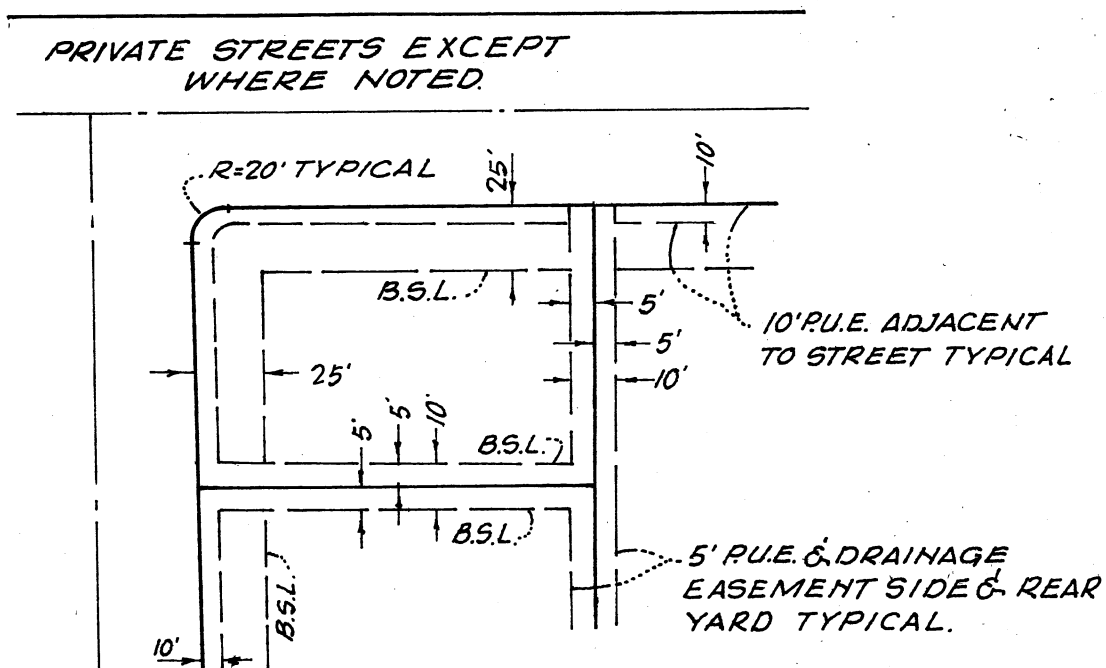


NOTES:

1. REAR LOT PINS WERE NOT SET AT THE REAR OF LOTS 266 TO 272 INCLUSIVE.
2. WITNESS POINTS WERE SET AS SHOWN Δ, 150' FROM THE FRONT LOT CORNER, EXCEPT WHERE NOTED.
3. THE LAKE LINE SHOWN IS FOR A NORMAL WATER SURFACE AT ELEVATION 1205 BASED UPON APRIL 1971 TOPOGRAPHY COMPILED BY HENDERSON AERIAL SURVEYS OF OHIO.

LEGEND

B.S.L. = BUILDING SETBACK LINE.
 L = ARC LENGTH
 T = TANGENT LENGTH
 R.U.E. = PUBLIC UTILITY EASEMENT
 LOTS 'A' TO 'N' INCLUSIVE ARE SUBJECT TO DRAINAGE EASEMENTS IN THEIR ENTIRETY.



THE STREETS WITHIN THE SUBDIVISION ARE RESERVED FOR THE USE OF ALL PUBLIC UTILITY COMPANIES.

TYPICAL FRONT AND SIDEYARD SETBACK, SLOPE EASEMENT AND R.U.E. DETAIL
 (NO SCALE)

CANDLEWOOD LAKE UNIT NO. 2

BEING A SUBDIVISION OF PORTIONS OF SECTION 56.8 TOWNSHIP 18 RANGE 20 CONGRESS TOWNSHIP, IN THE COUNTY OF MORROW, STATE OF OHIO.